



Packaging Systems Inc.

# SUPER SEALER

## AL 2418/ STR1200

Fully Automatic L-Type Sealing Machine

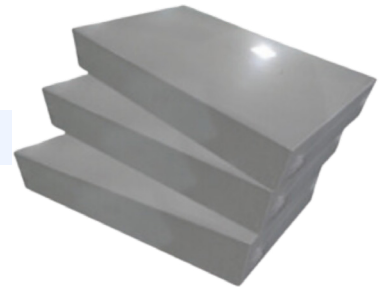


### APPLICATION:

Industries such as software, food, cosmetics, printing, pharmaceuticals, flooring, ceramics, beverages, metals, plastics, and more rely on large quantities of shrink wrap. This solution is ideal for various shrink packaging materials, including OPP, POF, PE, PVC, and others.

#### Features

- 1.) The anti-adhesive Teflon-coated sealing blade ensures a clean, secure seal without smoke pollution. An overheat protection feature extends its lifespan, while a hand-clamping protection device prevents accidental product damage and enhances operator safety.
- 2.) Choice of vertical or horizontal-type photocell sensor to suit various product sizes and thickness.
- 3.) Selected electrical components from reliable international manufacturer.
- 4.) Machine is equipped with safety transparent hood, complying with CE standard.



#### Options

- 1.) Kissing belt (Suitable for small, irregular products)
- 2.) Printing Film photo sensor
- 3.) 1.2m Infeed conveyer

| MODEL                      | AL 2418                     | STR1200                      |
|----------------------------|-----------------------------|------------------------------|
| Max. Sealing Size          | 450 x 600                   | 600 x 800                    |
| Packaging Capacity Per Min | 25 pcs                      | 20 pcs                       |
| Max Packaging Size (mm)    | L 460mm, W 320mm, H 100mm   | L 680mm, W 480mm, H 100mm    |
| Power                      | 1 ph 220v                   |                              |
| Heating                    | 1.5kw                       | 2 kw                         |
| Machine Size (mm)          | L 1920mm, W 840mm, H 1540mm | L 2360mm, W 1170mm, H 1770mm |



Contact Impak today to speak with one of our packaging specialists, and to request a free, no obligation quote.

**416-299-0960**  
**Impakpackaging.com**