

**ROBOPAC** 

**SEMI AUTOMATIC**

# Robot S6

SELF-PROPELLED ROBOT FOR STRETCH WRAPPING



# Robot S6

## SELF-PROPELLED ROBOT FOR STRETCH WRAPPING

The Robot S6 with CUBE Technology is the most innovative, portable stretch wrapper in the market. It is also the easiest to use, thanks to its intuitive 7 inch color touchscreen. If you can operate a smart phone, you can operate the Robot S6!

The NEW Robot S6 with CUBE Technology will reduce your film usage by 30% to 55%, improve your load containment and reduce your product damage.

The portability of the Robot S6 can deliver 25% productivity improvement for order picking applications. It excels in the distribution environment. The S6HD is flexible, allowing you to optimize your current product flow. The S6HD will eliminate extra handling movements to and from a fixed position wrapper.

The Robot S6 is a great solution for customers who need to wrap extremely large loads. The Robot S6 can wrap loads of any length and width. It takes up very little floor space and can be moved out of the way when not in use.

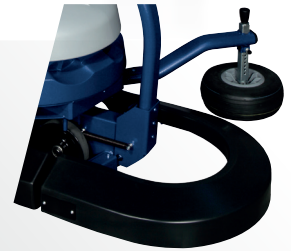


## TECHNOLOGY SOLUTIONS

ONBOARD  
BATTERY CHARGER  
120 V SINGLE PHASE



ACTIVE  
EMERGENCY  
STOP BUMPER



"QLS"  
(QUICK LOAD SYSTEM)  
FOR EASY AND QUICK  
FILM LOADING



IDLE WHEEL  
ENSURES PORTABILITY  
WITHOUT POWER



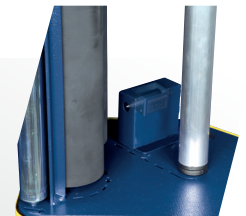
WHEEL HEIGHT  
ADJUSTMENT



NEW COLOR  
TOUCH SCREEN  
CONTROL PANEL

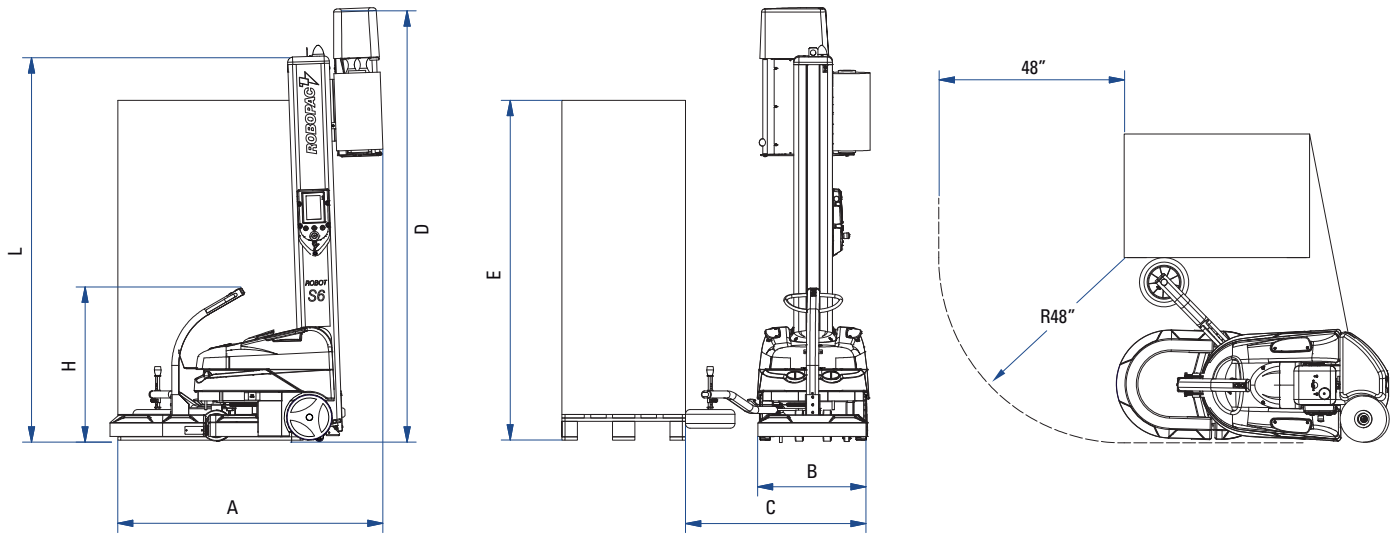


AUTOMATIC FILM  
CUTTING DEVICE



The ROBOT S6HD includes our standard film cutting device. Cutting the film automatically at the end of the wrapping cycle is a great convenience for the operators.

# Technical Features



MACHINE	ROBOT S6 PVS	
Industrial duty batteries	12 V	(n.)
Rotation speed	35-50	(ft/min)
Upward-downward carriage speed	up to 260	(ft/min)
Power supply	115V single phase, 20 amp, 60Hz	(V)
Rear and both sides forklifting	STD	

## CHARACTERISTICS OF THE PRODUCT TO BE WRAPPED

Minimum dimensions	24"x24"	(in)
Maximum useful height	110 or 86	(in)
Minimum load weight	200	(lbs)

## FILM FEATURES

Max. external diameter	12	(in)
Internal diameter	3	(in)
Film thickness	39-120	(gauge)
Film height	STD 20" carriage OPT 30" carriage	(in)
Max. spool weight	44	(lbs)

## PROGRAMMING

(Standard, Partial Cube, Cube Technology)

12 unique wrapping recipes can be programmed from the color touch screen	STD
Dark load height sensing by photocell	STD

STANDARD USA CONFIGURATION	E= 110" STD	
A. Operating Length	in	72
B. Base Width	in	28
C. Operating Width	in	46
D. Max Operating Height	in	134
H. Wrapping Height	in	110
L. Height to top of mast	in	101

Shorter configurations are available for applications with overhead obstructions.

# Control Panel

The control panel has been newly designed, adopting it to a touch screen. Thanks to the large color screen, this new panel allows you to create programs simply and immediately. It is supplied with more memory to record up to twelve (12) different programs.

## CYCLE DESCRIPTION

- ▶ Two way wrapping cycle
- ▶ Upward-downward cycle
- ▶ One way wrap cycle for light loads
- ▶ Top sheet cycle
- ▶ F1 program large loads
- ▶ F2 program round products
- ▶ Partial cycle counter
- ▶ Resettable cycle counter
- ▶ Photocell delay for top overlap
- ▶ Adjustable start position
- ▶ Control panel lock
- ▶ Operational output data

## CONTROL PANEL

### FUNCTIONS DESCRIPTIONS

- ▶ Store up to 12 wrapping programs
- ▶ Rotation speed setting
- ▶ Carriage ascending speed
- ▶ Differentiated descending carriage speed
- ▶ Adjustable top wraps (1-9)
- ▶ Adjustable bottom wraps (1-9)
- ▶ Programmable reinforcing wrap-location and # of wraps
- ▶ Targeted film force
- ▶ Targeted film stretch
- ▶ Targeted film placement
- ▶ On screen E-Stop
- ▶ Broken film alarm
- ▶ Cycle reset indicator



Cube Screen



Standard Control Screen

## POPULAR OPTIONS

### 30" ROLL CARRIAGE

Upgrades the standard 20" roll carriage to enable it to handle up to 30" rolls of film. This can increase production rates by as much as 10 loads per hour depending on the height of the load.

### BLUE PERIMETER TRACKING LIGHT

### ELECTRIC VARIABLE ROPING DEVICE

Creates preprogrammed variable width rope for specific placement on the load. Position and width variable up to 9 locations.

### EXTRA BATTERY PACK WITH CABLES INCLUDES 2 BATTERIES, TRAY & CABLES

Includes two 12-volt batteries, a battery pack, and all cables. Ideal for multiple shift applications. Simply replace the depleted battery pack with the new reenergized pack. Used in conjunction with our external charger for continuous use applications.

### SPARE EXTERNAL BATTERY CHARGER

### COLD ENVIRONMENT KIT

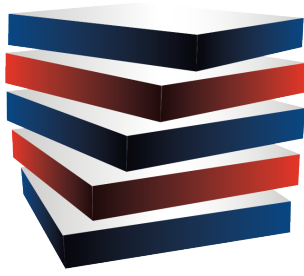
(contact RSM for Pricing and Details)  
For operating in temperatures 30F- to 104F.

### BLUE LED SAFETY LIGHT

Replaces flashing yellow beacon. Mounted on top of Mast. Blue light beam is visible on floor in front of Robot S6HD travel path. Alerts fork trucks and personnel. Helps to protect the Robot from being damaged by clearly defining the operational path.

### R-CONNECT

With multi-level variable pre-stretch ensures the best film economy for every load.



# CUBE™

TECHNOLOGY

## THE LOWEST TOTAL COST OF OWNERSHIP

Includes multi-level variable pre-stretch.

Variable Prestretch ensures the best film economy for every load.

Variable Prestretch guarantees the highest containment and best film economy. Optimizes 100% of any film's containment energy.

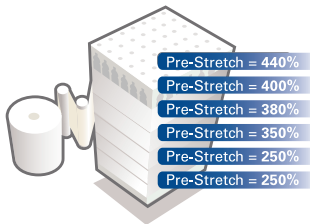
Adjustable pre-stretch up to 9 times on each load.

Strategic film placement allows the film to be placed exactly where it has the most impact on load stability and containment.

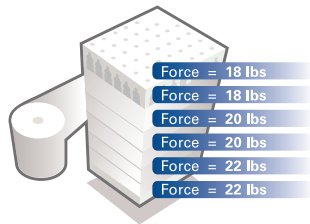


*Deliver EXACTLY the right amount of film at EXACTLY the right position with EXACTLY the right containment force*

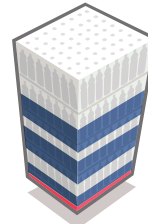
- ▶ Reduces film cost by 30% to 55%
- ▶ Improves load containment
- ▶ Reduces product damage by 40%



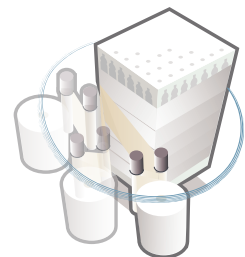
Multi-level variable pre-stretch



Multi-level variable containment force



Strategic film placement



ProActive corner compensation



# R<sup>®</sup>connect

OPTIONAL

## INNOVATION AND CONNECTION FOR CUSTOMER SERVICE:

*maximum productivity as a result of constant monitoring of proper machine operation.*

Robopac launches R-Connect, a technologically advanced monitoring system that combines innovation and connection, enabling complete control of machine operation and total support to the end customer.

R-Connect is a “turnkey” system for the end-user: the main advantage is total “peace of mind” regarding machine operation, which includes production performance verification and optimization of all management costs.

The system minimizes machine downtime and manages maintenance operations better, also providing an immediate troubleshooting procedure.

Robopac machines are already set-up to install a special Gateway router that sends all information in real time, making it available in the Cloud, with statistics that can then be used via a simple internet connection from any device (PC, tablet, smartphone, etc.).

- ▶ Performance optimization & monitoring
- ▶ Predictive maintenance
- ▶ Downtime reduction
- ▶ Plug & play
- ▶ Industry 4.0
- ▶ Measure Film Consumption

**ROBOPAC**   
Innovation driven by values

ROBOPAC U.S.A.  
2150 Boggs Road, Building 200 - Suite 200 - Duluth, GA 30096 USA  
T. (+1) 678 473 7896 - (+1) toll free 866 713 7286  
info@aetnagroupusa.com  
www.robopac.com/US

Robopac USA is located in Duluth, GA.  
We have an extensive inventory of spare parts  
on hand to ensure that your needs are being met!

